



December Peace, Love and 2006 Christmas Puddings! from Jindibah Community

Well, here we are again at the end of yet another very busy year at Jindibah Community. We've had many comings and goings of our fascinating and diverse cast, which, as of this moment has now reached a very grand total of 18 of us (of 7 nationalities) on the Title Deed.

We were sad to see **Jesse Blackadder** move to beach-side Byron, but happy to see her still onsite today, regularly using our old dance hall as a practice studio for her ballroom dancing skills.

Having bought Jesse's block, **Annette and Mark Kern** now have their **Bush Rock Cafe** at Blackheath, in the Blue Mountains, on the market. We've lost count of the number of times they've done the shuttle run up from Sydney, coming to attend workshops and working bees, to investigate architects, sources of building supplies and work opportunities, and generally integrate themselves with our community life.

Pippa Markham spent a frantic month exploring every source of 1950s furniture within a 100km radius to redecorate the original **Fowler farmhouse** in a style well suited to its past. It's amazing to see how different the atmosphere becomes as each of us brings in our particular individual style.

Speaking of style, classical musicians **Inge and Martin Lass** fall clearly into the category of "motivated buyers", if ever there was one. Though they were planning to pioneer a Byron community themselves, one look at Jindibah in June and they changed horses mid-stream, rapidly selling their Rozelle house and relocating onsite by 1 November. Not to be outdone, their long-time buddy, Qantas pilot **Alan Hennessy**, followed suit, settling on CT Lot #6 by early December. Our crew is growing in strength, diversity, energy and skills - as well as numbers.



Annette and Mark Kern: leaving behind the Blue Mountains icy blasts to bring us a ready-made farmyard of geese and ducks - not to mention cooking skills. The standard of community meals has improved out of sight with their professional input!

New to our community



Bringing a style all her own: **Pippa Markham** takes over the farmhouse



Inge and Martin Lass take ownership of CT Lot #10, and promptly take off for Venice (below) and other European ports, before a belated Scottish honeymoon, 30 years after the fact.



Whichever way you look at it, **Alan Hennessy** will liven up any kitchen with his culinary equipment sourced from all round the world, not to mention a great sense of comic timing!



Jesse and Andi prepare to take on the Montreal ballroom dancing scene.

JINDIBAH

2006

News Update...2



To reach the point where **Rob Doolan**, town planner *extraordinaire*, submitted our **Development Application** for **Community Title** to Byron Council on 22 Nov. 2006, has taken us a journey of 10 years.

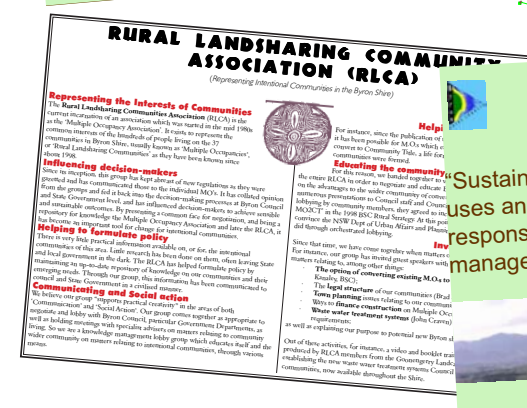
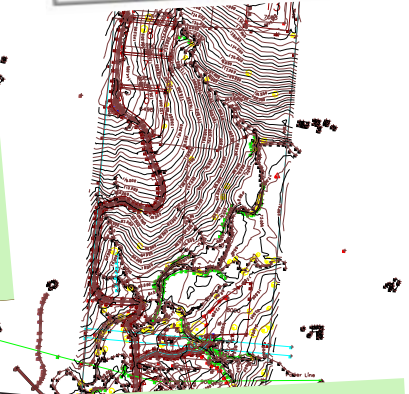
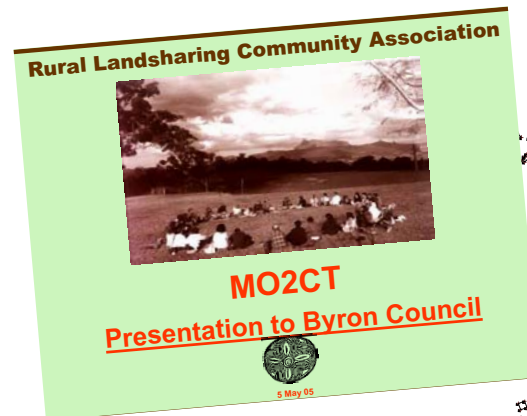
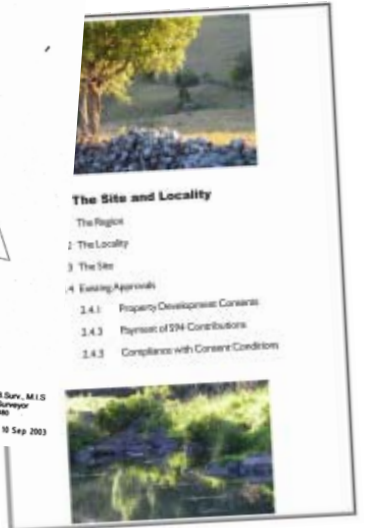
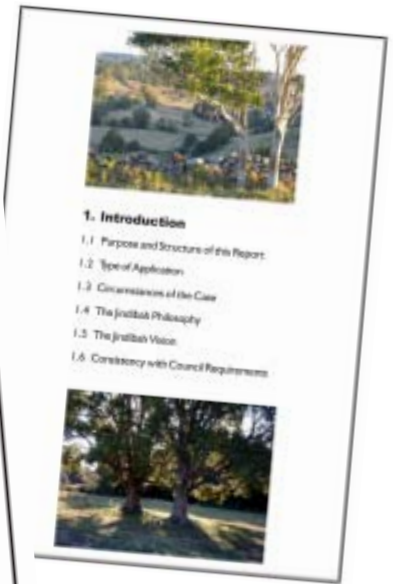
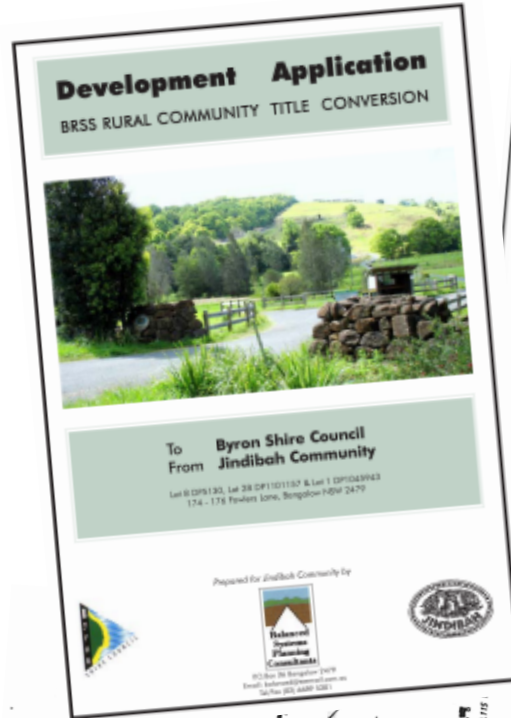
Since the release of the **1998 Byron Rural Settlement Strategy**, members of the Jindibah Community (and other Byron Multiple Occupancies) have been able to apply to convert to the **Community Title** structure which didn't exist when we were all setting up.

To us, the **advantages** of Community Title structure are **economic, legal and social**. Should we be granted CT status in 2007, this will allow our members who own blocks but haven't been able to build, to get **bank mortgage finance** already enjoyed by other people in Byron Shire with title to their own land. As well, we feel the C.T. Management Plans give members a **more solid legal framework**, plus **blocks will be easier to buy and sell**. Already plans are in the works for (at least) three new houses to start next year.

The **decade-long conversion process** has been extremely significant for Byron Council, as well as for our community members. Together, we have trail-blazed in our efforts to **cooperate and work towards a common vision** - just like we do on our community. Two Jindibah community members, on the steering committee of the **Rural Landsharing Communities Association (RLCA)**, have carefully kept open lines of communication with **3 consecutive Byron Councils** (both **staff members and councillors**), **3 different mayors, 5 general managers and 3 planning directors**, explaining to each fresh set our *raison d'etre* (not to mention the govt depts!)

The patience of the numerous **consultants** who have worked with us during this time to provide Council with needed information, is acknowledged, and has earned our deep respect.

Converting to Community Title: Trail-blazing Council Cooperation



JINDIBAH

2006

News Update...3



Our community is lucky enough to have within it 2,500sqm of **remnant and regrowth rainforest** identified as 'High Conservation' vegetation with very **high ecological value**.

Following the guidelines of environmental consultant **Rob Fleetwood** in his 2006 revisions to our original **Firewheel Plan**, this year we extended this HCV zone, planting area **R2** of our **Environmental Enhancement Plan** and completed the **R1** plantings (the 'R' referring to '**Rehabilitation**'). The areas are safely fenced off from our cattle, who earn us the money to pay for the trees we are planting.

Meanwhile, we have an ongoing program to systematically **kill camphor laurels**, and their decaying skeletons are part of a familiar landscape.

Lomandra incrementally planted along the creek since 1996 are doing well and have stabilised creek banks, subject to periodic flooding.



Apart from extending our remnant rainforest, the focus of this year's **working bees** has been on **maintenance** of the areas which have already been planted out, or which we have planted for pleasure and/or aesthetic value, such as the property entrance and the area on either side of our bridge over Sleepy Creek.

As the year closes, we are planning our **2007 regeneration project**, as well as a **pasture improvement** program to improve the grazing quality for our cattle, and the never-ending weed control.



Regeneration and farm maintenance



A working bee party establishing weed mat (above); newly planted R1 area (below).



Watering and mulching the new R2 plants.



Dead camphors on our northern boundary (above).

A tiny fig found growing in the trunk of a dead camphor (right).



We are experimenting with two types of mulch in this regen area: organic and weed mat (above).



(Above) The big day for planting out the R2 rehabilitation area, north of Sleepy Creek, while (below) - a mid-winter working bee provides the chance for a clan get-together.



Rounding up cattle for drenching.



JINDIBAH 2006

News Update...4



Something in the air (or is it the water?) makes people living on our community find excuses to gather together and have fun. Hopefully we are living up to the stirring example left to us by **Harry Fowler** and his family, the property's previous community-minded owners, who set a cracking pace by hosting decades of activities and fun.

This year, we've run our regular Greg McHale **'Living Together'** workshops for our members. As ever, they are a really valuable experience for us. We find out more about each other and where we're each coming from, increasing compassion and understanding. This really helps in day-to-day interactions running the farm and the community.

In Harry Fowler's old creekside shed, we've had lunches and barbecues with **Fowlers Lane neighbours** and friends from **Twin Creeks**, another community further down the lane.

As well, we've hosted afternoon tea for the **Pony Club** run by Friday Hut horse-woman **Susie Wroe** on its cross-country treks.

Maggie and Paul and 2006 baby Allegra (right).



Friends and neighbours



Community life: the people



A lunch with Twin Creeks friends (above), and Penny and Keira introduce a new horse.



A maypole ribboning a few years back.



A Fowlers Lane people get-together.



Harry Fowler's 80th birthday in the shed.



Annette and Cathy (above)



Georgia and Allegra

Northerly neighbours, Nell and Gordon Coles (below).



Annette and Mark bring Blue Mountains' weather to a winter barbie (above).



Neighbours Mick, Fay and Craig (above right); interval at a **Living Together** workshop (below).



Susie Wroe's Pony Club (above).

(Below) Using hot air constructively (!) a balloon glides up our valley.





IS THERE ANYONE ELSE out there, like us, who believes there are three major threats to living a sustainable life today? Seems to us that we face:

■ **Global Warming** ...exists and is caused by the human race, as agreed by the scientific community (even though some politicians may still drag their heels regarding this 'Inconvenient Truth').

■ **Peak Oil** The oil industry has been less than upfront about the fact that **oil is running out**, and that what is left is going to be pricey to extract. But the demand for oil increases as China and India ramp up their economies. So the **price of oil will continue to rise**, probably exacerbated by speculation on the futures markets. Australia will record a \$20 billion trade deficit for crude oil within a decade as local production has peaked and continues to fall, according to a report to a Senate Enquiry from the **Australian Petroleum Production and Exploration Association**.

■ **National Energy Security** The bulk of remaining oil reserves are located in the Middle East, currently in political turmoil.

Some claim that we are already experiencing our first 'oil war' in Iraq. Iran is now openly threatening to use the oil weapon should the UN impose sanctions over its nuclear ambitions, while at the same time calling for the elimination of Israel.

People now realise that the West is currently funding both sides in the war against terrorism and would like their **transport needs to be free from dependence on mid-east oil**.

In any case, if oil production is on the decline, we **need to stop burning this finite resource** because its derivatives are needed to manufacture so many other **essential products** from fertilisers to medicines.

Sourcing Sustainable Energy



In our quest to find a clean energy source for life at Jindibah, we found **Greg Watson** and his **SunCube** (above). Greg and his Adelaide-based company **Green and Gold Energy** (being interviewed at right by Christopher), has produced these 0.9metre-square solar tracking units.



The SunCubes follow the sun and absorb its energy more effectively than traditional solar panels. As well, these **CPVs** are **twice as efficient** as traditional solar panels. When the **SunCubes** have finished undergoing their rigorous government testing process, we plan to test them out as a renewable energy source at Jindibah.



New house with solar hot water system

Decision time!

Scientists say we have **10 years to start making some sensible changes**. So here at Jindibah, we need to consider the way we generate and use energy and move progressively towards '**carbon neutrality**,' where **zero emissions=100% carbon neutrality**.

In this environment of Global Warming, Peak Oil and National Energy Security, the responsibility of government is to continue to provide affordable energy to Australian homes and businesses. So, for economic reasons, their focus is on developing the big **centralised power station solutions**, to generate **clean energy** from Australia's abundant coal supply.

But developing and implementing such solutions using **geo-sequestration** is likely to take a minimum of 10-15 years. **Nuclear** solutions, if politically acceptable, would cost more, take longer to implement and create expensive waste problems.

However **decentralised technology** is already enabling the use of **economically viable, roof-mounted, PhotoVoltaic (PV) solar electricity generators** at the home or business level, that can also be connected to the grid to provide back-up when the sun isn't shining.

So it would seem, during at least the next 10-15 years, that in addition to its centralised solutions, the **government** needs to provide **incentives** for people to install such **distributed solutions**, as well as legislating for feed-in tariffs that are fair to the power utilities and the householder.

Concentrated PV (CPV) micro generators are starting to become available. These are more than twice as efficient as the PV variety. Distributed electricity solutions put the generator where the user is and thus avoid the 25-50% loss of power that occurs when electricity is distributed over the grid.



JINDIBAH

2006

News Update... 6



■ **On the transport front**, Electric Vehicles (EV's) and Plug-in Hybrids (PHEV's) avoid or minimise burning oil. **Solar or wind-based micro 'clean electricity' generators** (like the SunCubes) can re-charge EV's at the home or business without requiring the building of expensive infrastructure: we already have access to the grid.

So to **work towards a carbon neutral** existence, these are some of the longer term solutions that we are starting to debate at Jindibah. Meanwhile we are retrofitting, designing and/or building our new houses to be as highly energy efficient as practicable.

Within our broader community, we are experimenting with ideas to help busy people come to grips with the Global Warming concepts. To this end, **Christopher and Christobel** instigated a **Climate Change Film Festival** in Bangalow in November, held under the auspices of the **Bangalow Community Alliance**, a body they helped create about 6 years ago to hold forums about matters of concern to the residents of the 2479-post code. At the RSL hall (below) a range of documentary films was screened covering Global Warming, Peak Oil, Climate Change, and Electric Vehicles.



Meanwhile, with our neighbours **Jo Walsh** and **Mick O'Regan** from the **Twin Creeks** community, also in Fowlers Lane, and other friends, we are preparing a **BCA Climate Change 'Hypothetical'** event to be held in Bangalow in Feb 2007.

For more detailed information on this topic, click onto our website: www.jindibah-community.org and then the **Threats to Global Sustainability** link.

Aiming for carbon neutrality

Jindi members considering their next vehicle purchase are talking about the Hybrid **Prius** (top) that Pippa already drives, or maybe (given a lazy US\$100K), an electric **Tesla** (above). Perhaps we'll just follow **Annette and Mark's** lead and drive a car converted to run on **LPG gas**, as they have been doing for decades in their trusty **Kingswood**.



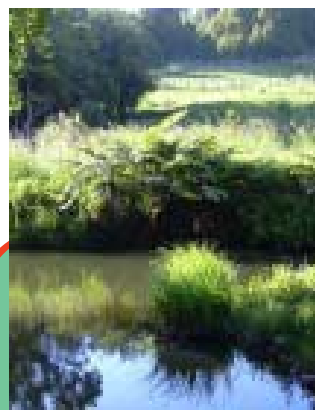
Some of our annual 1.8m rainfall arrives (above) and is drained downhill (below right)



(Left) The Kahlert's landscaped waste water treatment system.



(Left) The original Fowler farmhouse (now Pippa's), with solar hot water system.



ENERGY SAVING we do at **Jindibah** ✓

- ◆ Signing up for Green Electric Energy
- ◆ Composting ◆ Recycling ◆ Passive solar house design ◆ Fluoro light bulbs ◆ good insulation ◆ planting trees to offset carbon emissions ◆ buying local at Farmers Markets ◆ growing fruit and veggies ◆ roof rainwater harvesting ◆ huge water tanks ◆ solar hot water ◆ rainforest revegetation ◆ ongoing research into energy and food production ◆ contemporary onsite waste-water systems

JINDIBAH 2006 News Update...7



▶ Back at the farm, in February **Christopher and Christobel** moved into their new home on the 'mezzanine' level, after 10 years living in the original farmhouse. They are discovering the effect of more light and wind in their **Eddie-Buivids** designed home, (*top right and bottom left pix*) skillfully built in 4.5 months by **Phill Johnson**.

▶ Days after moving in, C+C hosted award-winning Austrian film-makers **Paul Poet** and **Andrea Minauf**, visiting Australia to research a major cinema documentary on micro-nations and alternative communities world-wide.

▶ **Maggie Mulham** and **Paul Donovan**'s baby, **Allegra**, born in January was introduced to the community during a family holiday, a very welcome addition to the Jindibah family.

▶ Globe-trotting Bettina leapt at the chance to go to the **Burning Man** annual art festival and temporary community in the Black Rock desert of Nevada, USA, with Echo photographer **Jeff Dawson**. Later, she joined husband **Stephan** in India after his meditation retreat and before they attended another yoga training course.

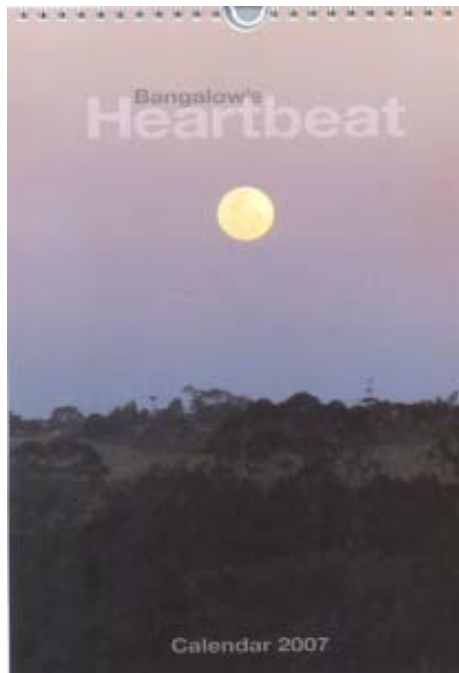
▶ **Keira** just keeps winning prizes for her extraordinary horse-riding, most recently at the **Bangalow Show**. She and **Penny** have also spent quite some time camping and gem-fossicking this year.

▶ Christobel, who has been writing for the local **Bangalow's Heartbeat** magazine for six years, had two of her photos chosen for the Bangalow's Heartbeat 2007 Calendar: the front cover, and 'March 2007'; both taken at Jindibah.

She, Christopher and Jindibah were the topic of a chapter in a book released by former Byron Shire News journalist, Robyn Gray, called **'The Other Side of Byron'**.

Earlier in 06, Christobel was asked to write an article for April/May issue of **The Nimbin Magazine** on a topic well-known to her: **'Converting Communities from Multiple Occupancies to Community Title'**.

What we've been up to



Bangalow's Heartbeat Calendar: **JindiPix**.



MARCH



Austrian film-maker **Paul Poet** (*right*).



Bettina at **Burning Man** (*left*), pix by **Jeff Dawson**.



Christobel

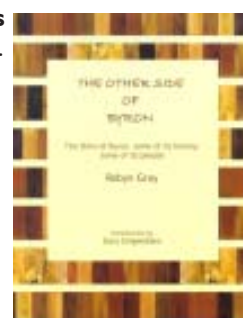


Our chooks (*above*): homage to **Harry Fowler** and his **Poultry Pavilion** at the Bangalow Showgrounds.

Chris in his new office, (*right*) hosting the equipment to operate **JindiNet**, our



non-profit **wireless broadband network**.



C+C's new house (*above*)



Chris at Kakadu (*above*); Allegra+fans (*below*)



Seasons Greetings and a

Happy New Year!



All of us here at Jindibah - both residents and residents-in-waiting - wish you a very happy and relaxed holiday season, and an exciting year ahead.

We would like to thank our friends and consultants who are helping us to establish Jindibah as the beautiful, functional, authentic community it is becoming.



Jindibah Community, Sleepy Creek, Bangalow NSW 2479 Australia

is a 12-house-site Multiple Occupancy intentional community in the process of converting to Community Title.

It is located on a 46ha farm in Fowlers Lane, Bangalow, in the Byron Shire of Northern NSW.

For more information, see www.jindibah-community.org, or email DIY@jindibah-community.org

© Christobel Munson, NOT JUST WORDS, Jindibah Community, December 2006

